



ESSENTIAL PARTS + SUPPLIES GUIDE

THOUSANDS OF
ADDITIONAL PARTS
AND SUPPLIES ARE
AVAILABLE!

Need help?
allpointsfps.com
Call or text 800.332.2500



AllPoints
The Place for Repairs

AllPOINTS®
FOODSERVICE PARTS & SUPPLIES

When commercial kitchens break down, restaurant operators need a fast, reliable, and exact-match source for replacement parts. That's why dealers partner with AllPoints. Welcome to the largest selection of in-stock products with the best value in the industry.

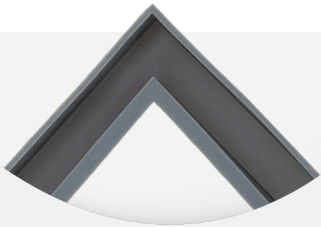
For more information about our location, operating hours, and contact information, visit us at allpointsfps.com/contact-us

CONTENTS

- 02** OUR CORE BRANDS
- 03** HOT SIDE PARTS
- 04** COLD SIDE PARTS
- 05** CHEF APPAREL
- 06** ESPRESSO PARTS
- 07** BROILERS + GRIDDLES
- 08** GRATES + KNOBS
- 09** GAS HOSES
- 10** HOOD FILTERS
- 11** FRYER BASKETS + ACCESSORIES
- 12** POP DISPLAYS + ITEMS / LATCHES, HINGES + CURTAINS
- 13** GASKETS
- 14** SHELVING + CLIPS
- 15** TIMERS
- 16** MIXERS + ACCESSORIES
- 18** FILTERS / WARMER BULBS
- 19** CLEANERS / TEST STRIPS
- 20** FIFO BOTTLES
- 21** CUSTOM PRODUCTS
- 22** NOTES

MORE THAN JUST PARTS

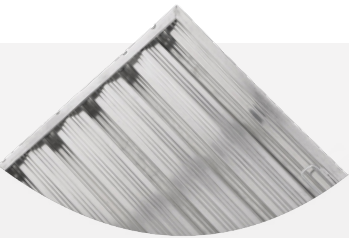
AllPoints offers a wide range of products to meet the needs of any commercial kitchen. From apparel and replacement parts to big equipment and smallwares, our products are backed by a commitment to quality.



GASKETGUY®

CUSTOM GASKETS

Made-to-order from Gaskets Unlimited for fast turnaround.



HoodFilters.com
RESTAURANT VENTILATION SUPPLY

HOOD FILTERS

Directly sourced for complete safety and compliance.



FRANKLIN™
EST. 1918

FRANKLIN MACHINE PRODUCTS

Specialized hardware from a century of innovation.



 **KNG**

APPAREL

KNG professional apparel with custom design options.



 **ESPRESSO PARTS**

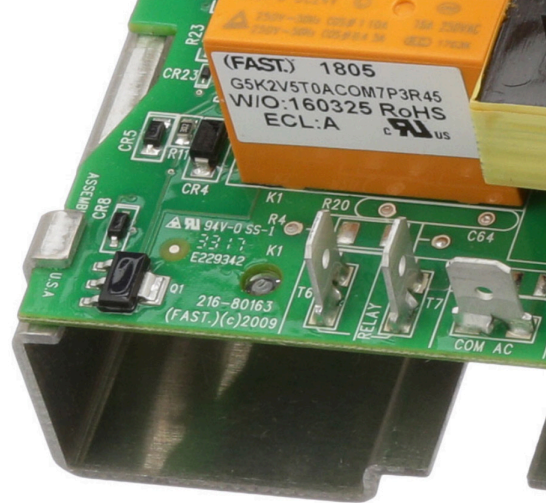
SPECIALTY BEVERAGE

Parts and equipment for espresso and coffee systems.

HOT SIDE PARTS

CHOOSE THE HOTTEST PART

Original Component Manufacturer (OCM) parts are a cost-effective alternative to OEM parts. These exact-match OCMs come standard with a 180-day warranty, same-day shipping, and a customer service team that can guarantee their performance.



Glass Tape

Product No. 851108



Sensor

Product No. 441754
OEM No. 271621



Kason® Door Latch

Product No. 264627
OEM No. 100612201K



Ceramic Kit

Product No. 282032
OEM No. 283878



Gauge Drill Set

Product No. 721017



Grate Top Section, 12"

Product No. 8010820
OEM No. 35807



O-Ring 13/16" x 3/32" W

Product No. 321566
OEM No. 053300026069



Control Board

Product No. 461259
OEM No. 1181998



Ignition Control

Product No. 441266
OEM No. 20348



Temperature Control Board

Product No. 461898



Temp Probe

Product No. 441235
OEM No. 00-35358900001



Flame Sensor

Product No. 8010200
OEM No. 1195448



Oven Door Switch

Product No. 421425
OEM No. 1177567

For more hot side OEM parts, scan this code!



COLD SIDE PARTS

CHOOSE THE COOLEST PART

AllPoints offers exclusive Original Component Manufacturer (OCM) parts with a 1-to-1 match to every OEM. OCM parts are made in the same factories and to the same specifications, but come with a 180-day warranty and a much better price.



Screw, Pan HD 6-32 x 1/4 PHL PN MS 18-8S
Product No. 262989
OEM No. SC01023



Heater Wire (25ft)
Product No. 381371



Door Gasket (Magnetic, 75")
Product No. 1271248
OEM No. 01100V160271C



Glass Globe 3-1/4" Dia. x 6-3/4" L
Product No. 281396



Kason® Hydraulic Door Closer
Product No. 263327



Lamp 130V, 25W
Product No. 381459
OEM No. 801112



Bullett Piercing Valve
Product No. 561384



Zinc Shelf Support
Product No. 23202



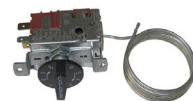
Low Pressure Switch
Product No. 8011299
OEM No. 9041104101A



Coil Temperature Sensor
Product No. 441440
OEM No. 3346040602



Ice Thickness Sensor
Product No. 441579
OEM No. A39031021



Temp Control
Product No. 461387
OEM No. 800393



Fan Motor 120V
Product No. 681174
OEM No. 50639801



Ice Thickness Probe
Product No. 8025535
OEM No. 000008660



CHEF APPAREL

Want a style that stands out? Creating a unique look for your business is easy and affordable with KNG. Find the perfect combination of affordability and fabrics with KNG's state-of-the-art printing capabilities and customizations.

As an industry leader in restaurant apparel, you can trust KNG to deliver.



2XL Executive Chef Coat, Black Trim
Product No. 10482XL



M Executive Chef Coat, Knot Buttons
Product No. 1049M



LG Mens Chef Coat Black, Short Sleeve
Product No. 1053L



5XL Mens Chef Coat, Long Sleeve
Product No. 10505XL



4XL Mens Chef Coat, Black, Long Sleeve
Product No. 10524XL



XS FrontSnap Cook Shirt
Product No. 1140XS



XL Baggy Chef Pants, Striped
Product No. 1059XL



LG Baggy Cooks Pants, Black
Product No. 1421L



SM Baggy Chef Pants, Checkered
Product No. 1056S



XS Mens Chef Coat, Black, Long Sleeve
Product No. 1052XS



2XL Active Chef Shirt, Mens Red/Black, SS
Product No. 2126RDBK2XL



LG Active Chef Shirt, Mens Black, SS
Product No. 2126BKBKL



Chef Hat, 25/pk, White
Product No. KNG1152



Pill Box Chef Hat, Checkered
Product No. 1168BKWC



Bandana Hat, Red
Product No. 1055RDRD



19in Bistro Apron, White, 2 Pockets
Product No. 1042WHT



27in Bib Apron, 3 Pocket, Black
Product No. 2576BLK



30in Cobbler Apron, Black, 2 Pocket
Product No. 1163BLK

Find more products like these here.



ESPRESSO PARTS

Espresso Parts is a global leader in the specialty coffee industry with a comprehensive catalog of espresso machine parts, brewing equipment, and barista tools. Founded in 1993, Espresso Parts is committed to supporting cafés and customers through unrivaled service, a specialized custom shop, and an extensive inventory of high-quality components. Learn more at espressoparts.com.



**ESPRESSO
PARTS**



**Knockbox, Open Bottom,
6" x 6" x 5"**

Product No. EPKB665B



Knockbox, 6" x 6" x 5"

Product No. EPKB665B



**Pitcher Rinser, 7" x 15"
(NSF)**

Product No. EPPR715



**Pitcher Rinser, 7" x 24"
(NSF)**

Product No. EPPR724



**Espresso Machine Cleaner
(Puro Caff)**

Product No. EP_CLEAN



**Urnex Rinza Milk Frother
Cleaner**

Product URNX06



**Urnex Grindz Grinder
Cleaner**

Product No. URNX_GRINDZ



**Pall Caffeine Wrench
Multi-Function Tool**

Product No. PALLO_CAFFEINEWRENCH



Frothing Pitcher, 12 oz

Product No. EP_PITCHER12



Frothing Pitcher, 20 oz

Product No. EP_PITCHER20



Tamping Mat (5" x 12")

Product No. EP6030A



**Acaia Pearl Scale (Classic
Black)**

Product No. ACAIAPEARLATBL

BROILERS + GRIDDLES



2-Range Burner Griddle
Product No. 761150



4-Range Burner Griddle
Product No. 761151



Portable 2-Range Burner
Product No. 761152



Portable 4-Range Burner
Product No. 761145



Portable Griddle Top
Product No. 761147

Find more products like these here. 

BROILERS + GRIDDLES ACCESSORIES



Lava Rock (7lb Bag)
Product No. 281037



Broiler Brushes
Product No. 183300
(Coarse Bristles)
Product No. 183301
(Fine Bristles)



Grill Scraper
Product No. 851213

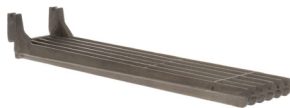
GRATES + KNOBS



Grate, Top - Broiler
Product No. 241205



Bottom Grate
Product No. 241046



Grate
Product No. 241031



Spider Grate
Product No. 241112



Valve Knob, 2-1/8" D
Product No. 221013



Knob 2" D, Pointer
Product No. 221106

Find more products like these here.



DIPPERWELL



Dipperwell with Faucet
Product No. 561462



Dipperwell 10" S/S
Product No. 561464



Floor Drain Strainer
Product No. 321444



Floor Strainer
Product No. 321422



Drain Grate, Floor Sink, FUL, 8-7/8"
Product No. 1171342



4-1/2" Wade Floor Drain Cover
Product No. 8009681

Find more Dipperwell products here.



GAS HOSES

WHY ARE SWIVEL CONNECTORS SAFER?

Standard connectors pull hoses at odd angles and stress connection points. These deluxe 360° swivel connectors rotate as needed to reduce tension, use less space, and extend the life of your connections.

These AllPoints-exclusive hoses meet or exceed ISO and ANSI standards and come with a 5-year warranty. Try them risk-free today!

| LENGTH | HOSE ONLY | HOSE KITS, QUICK DISCONNECT | HOSE KITS, DELUXE SWIVEL |
|-----------------------|-----------|-----------------------------|--------------------------|
| 1/2" HOSE SIZE | | | |
| 36" | 8016542 | 8016551 | 8016560 |
| 48" | 8016543 | 8016552 | 8016561 |
| 60" | 8016544 | 8016553 | 8016562 |
| 3/4" HOSE SIZE | | | |
| 36" | 8016545 | 8016554 | 8016563 |
| 48" | 8016546 | 8016555 | 8016564 |
| 60" | 8016547 | 8016556 | 8016565 |
| 1" HOSE SIZE | | | |
| 36" | 8016548 | 8016557 | 8016566 |
| 48" | 8016549 | 8016558 | 8016567 |
| 60" | 8016550 | 8016559 | 8016568 |

Find more products like these here. 

GAS HOSE ACCESSORIES GAS HOSE AC



Wheel Placement (Set of 2)
Product No. 281284

HOOD FILTERS



Replacing hood filters is one of the most effective ways to prevent kitchen fires and keep commercial kitchens safe.

- Aluminum hood filters
- Stainless-steel hood filters

For sizing, measure the length and width of your filter and round up to the nearest 1/2". If your existing hood filter is 15 1/2" H x 19 1/2" W, you would order a 16" by 20" hood filter. The vertical dimension (top to bottom) is listed first.

| PRODUCT NO. | ITEM NAME | SIZE |
|-------------|------------------|-----------------------------------|
| 8014104 | Alum Hood Filter | Nominal Size 16" H x 16" W x 2" D |
| 8014140 | S/S Hood Filter | Nominal Size 16" H x 16" W x 2" D |
| 8014107 | Alum Hood Filter | Nominal Size 16" H x 20" W x 2" D |
| 8014145 | S/S Hood Filter | Nominal Size 16" H x 20" W x 2" D |
| 8014113 | Alum Hood Filter | Nominal Size 20" H x 16" W x 2" D |
| 8014115 | Alum Hood Filter | Nominal Size 20" H x 20" W x 2" D |
| 8014159 | S/S Hood Filter | Nominal Size 20" H x 20" W x 2" D |
| 8014118 | Alum Hood Filter | Nominal Size 20" H x 25" W x 2" D |
| 8014164 | S/S Hood Filter | Nominal Size 20" H x 25" W x 2" D |
| 8014120 | Alum Hood Filter | Nominal Size 25" H x 20" W x 2" D |
| 8014170 | S/S Hood Filter | Nominal Size 25" H x 20" W x 2" D |



Baffle Boss® Hood Filter Lifting Tool
Product No. 31911

Find more products like these here.



HOOD FILTER ACCESSORIES HOOD FI



Wire Guard
Product No. 263164



Plastic Globe
Product No. 281399



Glass Globe
Product No. 281398



Glass Globe
PC 3-1/4" dia. x 6-3/4"
Product No. 281397

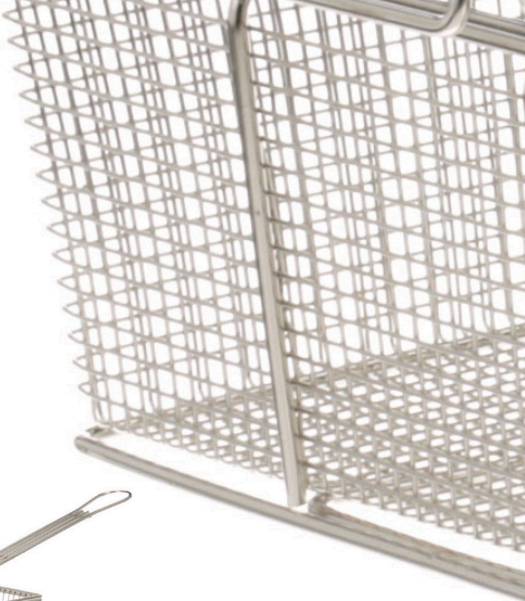


Fan Blade
Product No. 281896



Glass Globe
High Temperature
Product No. 131903

FRYER BASKETS + ACCESSORIES



Twin Basket
Product No. 63121



Full Basket
Product No. 261541



Full Basket
Product No. 261533

Find more products like these here.



FRYER BASKET ACCESSORIES FRYER BA



Clean Out Rod
Product No. 721131



Basket Support
Product No. 261559



Heavy-Duty Filter Paper
Product No. 8005820



Tube Screen
PC 3-1/4" dia. x 6-3/4"
Product No. 281397



Fryer Splash Guard
Product No. 265597

POP DISPLAYS + ITEMS



Leveler Glide, 4/pk
Product No. 263821



Glide, Self-Leveling
Product No. 263782



Wobble Wedge, Rigid, Black, 75/Box
Product No. 136353



Wobble Wedge, Rigid, Black, 300/Jar
Product No. 264528



Wobble Wedge, Black, 30/Pack
Product No. 281758



Leveler Glide, 72/pk
Product No. 263816

Scan this code to find more products like these.



LATCHES, HINGES, + CURTAINS



Handle with Strike
Product No. 221078



Hinge
Product No. 261583



Hinge
Product No. 261578



Door Closer Flush
Product No. 265324



Kason® - 1109400003 Door Closer
Product No. 262997



Kason® - 1017400004 Door Latch
Product No. 221456

WANT TO VIEW MORE PRODUCTS LIKE THESE?
Scan these codes to find more!



LATCHES



HINGES



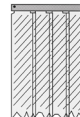
CURTAINS



Kason® - 401SA8080090 Single Strip
Product No. 321239



Kason® - 401SA6064284 Strip Curtain
Product No. 321234



Kason® - 401SA8084490 Strip Curtain-Easimn
Product No. 321858

GASKETS

Refrigerators and freezers are the most important pieces of equipment in your commercial kitchen. They can also be the most expensive when things go wrong. Keep your units running smoothly with gasket repair and replacement. Customers also have access to custom-cut gaskets to meet unique material, size, and application needs.



Door Gasket, 25-3/4" x 54-1/8"

Product No. 741058



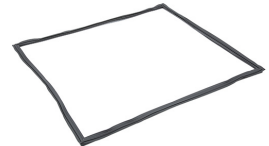
Door Gasket, 22-1/2" x 25-7/8"

Product No. 741356



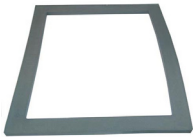
Door Gasket, 24-3/4" x 27-1/2"

Product No. 741090



Door Gasket, 23" x 26-1/4"

Product No. 741059



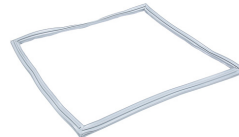
Door Gasket, 18" x 15-3/4"

Product No. 321316



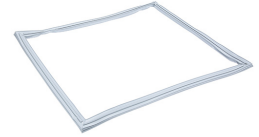
Door Gasket, 24-5/8" x 54-1/8"

Product No. 741056



Door Gasket, 23-1/8" x 24"

Product No. 741002



Door Gasket, 21-1/8" x 23"

Product No. 741001



Door Gasket, 26-1/2" x 26-1/2"

Product No. 741355



Door Gasket, 22-1/2" x 25-1/2"

Product No. 741087



The Gasket Boss™ 13 in Gasket Installation Tool

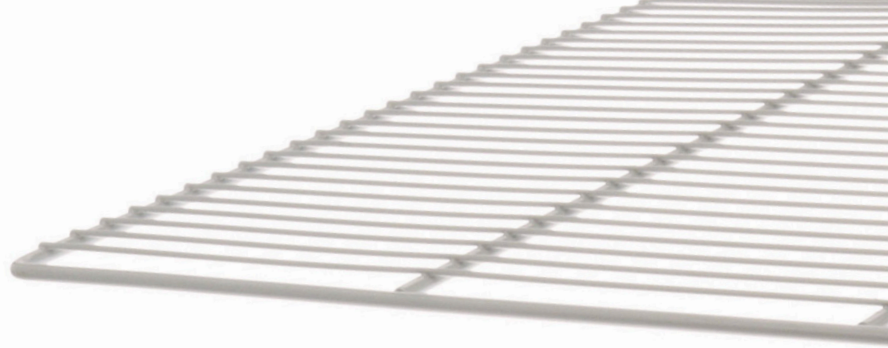
Product No. 1421666



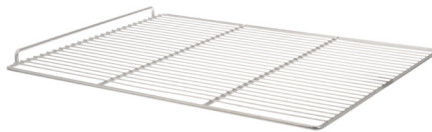
SCAN THE CODE ABOVE TO VIEW OUR
CUSTOM GASKET ORDER FORM.

SHELVING + CLIPS

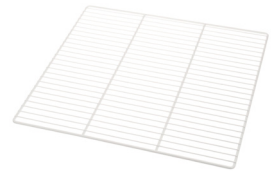
It's storage, made easy. Customize your cupboards, closets, and walls with stock and custom shelving choices.



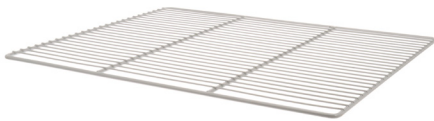
Wire Shelf - Zinc
Product No. 262643



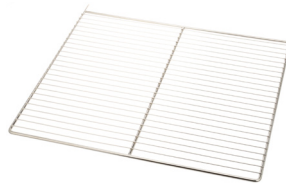
Wire Shelf
Product No. 262676



Wire Shelf - White Epoxy
Product No. 262652



Wire Shelf - Grey Epoxy
Product No. 263099



Wire Shelf - Chrome
Product No. 262657

Scan this code to view custom shelving options.



SHELVING ACCESSORIES SHELVING ACC



Clip, Pilaster
Product No. 263970



Shelf Support
Product No. 261878



Shelf Support Zinc
Product No. 261879



Shelf Support Zinc
Product No. 1351240



Shelf Support S/S
Product No. 1351241

TIMERS

It's time to master the clock in your kitchen. These commercial-grade timers come with 9-volt battery or AC adapter options, wall mounting, and large LCD displays to ensure no second is wasted in your operation.



4-IN-1 DIGITAL TIMER

Product No. 721662



INCLUDES:

- LCD display
- Beeper/LED
- T1, T2, T3, and T4 buttons
- Hours, minutes, and seconds buttons
- Start/Stop button
- Clear button

INCLUDES:

- 8 countdown timers with memory recall
- Adjustable by hour, minute, and second up to 20 hours
- 9V battery included
- Can be wall mounted
- High/Low volume control



8-IN-1 DIGITAL TIMER

Product No. 8014489

Find more products like these here.



MIXERS + ACCESSORIES

MIXER ATTACHMENTS AND BOWLS FITS ALL HOBART NON-LEGACY "HL" SERIES MIXERS



MIXING BOWLS

- Heavy-duty
- Stainless steel

| SIZE | PRODUCT NO. |
|----------|-------------|
| 20 Quart | 321866 |
| 30 Quart | 321867 |
| 60 Quart | 321868 |
| 80 Quart | 263841 |



FLAT BEATER/PADDLES

- Cast aluminum

| SIZE | PRODUCT NO. |
|----------|-------------|
| 20 Quart | 761246 |
| 30 Quart | 761247 |
| 60 Quart | 761248 |
| 80 Quart | 263844 |



SPIRAL DOUGH HOOKS

- Cast aluminum

| SIZE | PRODUCT NO. |
|----------|-------------|
| 20 Quart | 761241 |
| 30 Quart | 761242 |
| 60 Quart | 761243 |
| 80 Quart | 263848 |



DOUGH HOOKS

- Cast aluminum

| SIZE | PRODUCT NO. |
|----------|-------------|
| 20 Quart | 263840 |
| 30 Quart | 263842 |
| 60 Quart | 2051145 |



WIRE WHIPS

- Stainless steel

| SIZE | PRODUCT NO. |
|----------|-------------|
| 20 Quart | 2051030 |
| 30 Quart | 2051031 |
| 60 Quart | 2051032 |
| 80 Quart | 2051040 |

MIXER ATTACHMENTS AND BOWLS TO FIT LEGACY "HL" SERIES HOBART MIXERS



MIXING BOWL

- 20 quart capacity
- Plastic

Product No. 165504



MIXING BOWL DOLLY

- For 60, 80, and 140 quart bowls
- Also fits non-legacy "HL" series

Product No. 186315

WANT TO VIEW MORE PRODUCTS LIKE THESE?

Scan this code to find more!



MIXERS + ACCESSORIES

MIXER ATTACHMENTS TO FIT KITCHEN AID



5 QUART MIXING BOWL
Product No. 165507



5 QUART BEATER
Product No. 1631007



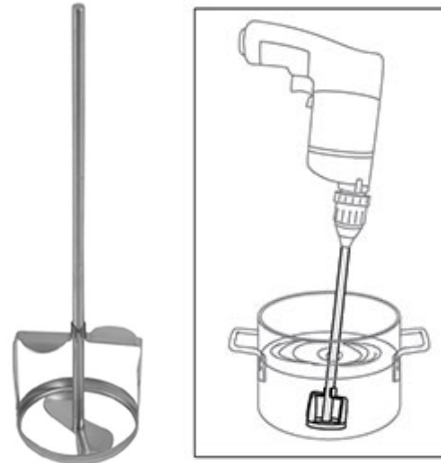
5 & 6 QUART WHIP
Product No. 1631012

STAINLESS STEEL MIXER HEADS AND SHAFTS

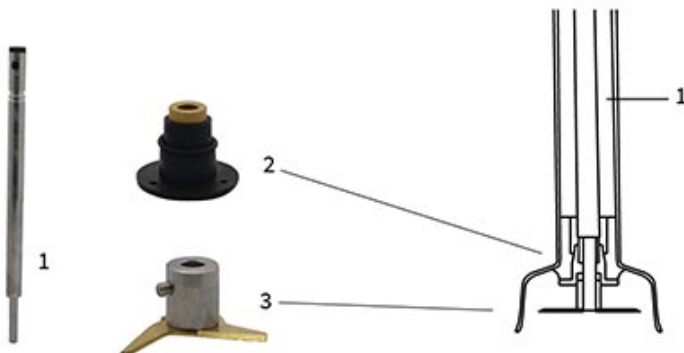
- For use with electric drills
- Whips, beats, blends, and mixes

CONTAINER SHAFT LENGTH SHAFT DIA. PRODUCT NO.

20-40 Quart 20-1/2" 1/2" 151352



PORTABLE MIXER PARTS FOR "DYNAMIC"



Fits Models Like This

| REF NO. | DESCRIPTION | MX91 | MF90 | MX2000 | MXH2000 | PRODUCT NO. |
|---------|---------------|------|------|--------|---------|-------------|
| 1 | Shaft | x | | x | | 265685 |
| 2 | Lower Bearing | x | x | x | x | 45130 |
| 3 | Blade | x | x | x | x | 265677 |

FILTERS

Unfiltered water can taste bad, damage appliances, and increase your risk of waterborne illnesses. AllPoints carries a variety of water filters from top brands like Everpure, 3M, and CUNO that remove impurities for clean, fresh-tasting water.



Pre-Filter
Product No. 13497



Filter Cartridge
Product No. 761161



Cartridge, Water Filter
Product No. 761166



Cartridge, Water Filter
Product No. 761174



Cartridge, Water Filter
Product No. 761288



Find more products like these here.

WARMER BULBS



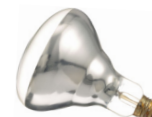
Infra-Red Lamp
Product No. 381033



Infra-Red Lamp
Product No. 381035



Infra-Red Lamp, 12/pk
Product No. 381036



Infra-Red Lamp, Clear
Product No. 381135

OTHER WARMER PRODUCTS OTHER W



Warmer Element
Product No. 341715
Product No. 341716
Product No. 341717



Toaster Element
Product No. 341430
Product No. 341432
Product No. 341433



Quartz Element
Product No. 341605
(14-1/4")
Product No. 341510
(32-1/4")

CLEANERS



Gas Cock Grease
Product No. 851114



Polish, Stainless Steel
Product No. 321702 - 1 gal
Product No. 321703 - 1 qt
Product No. 321704 - 10 oz



**Food Grade Cleaner/
Degreaser**
Product No. 851140



**Cleaner, Stera-Sheen
Red (24/case)**
Product No. 321800



**Powder, Fryer -
(72/Pkg)**
Product No. 321680

Find more products like these here.



TEST STRIPS



Tester, Micro Chlorine
Product No. 851238



**Test Strips, Ammonia
Compounds, 100/pk**
Product No. 851244



**Test Strips, Chlorine,
Sanitizer**
Product No. 851242



**Paper, Test - QT10
(Hydrion)**
Product No. 851285



Sanitizer Tablets, 150
Product No. 181430

FIFO BOTTLES

You need consistency in food service, but traditional squeeze bottles leave flavoring in the hands of operators. Enter the FIFO Bottle™, exclusively distributed in the U.S. by AllPoints. The FIFO Bottle dispenses the same amount of sauce with every squeeze, making it easy to give your customers the same delicious experience on every shift.



PRODUCE CONSISTENT FLAVOR PROFILES

Give your customers the same mouth-watering experience they expect every time.

REDUCE WASTE AND INCREASE PROFIT

Save 15% more sauce with bottom-dispensing FIFO than traditional squeeze bottles.

CREATE BETTER FOOD, FASTER AND MORE EFFICIENTLY

Make ingredient usage more predictable and eliminate bottle shaking.

MAKE IT YOUR OWN

Check out our full range of FIFO BOTTLE™ components to create the perfect condiment dispense to fit your specific needs.



Bottle (16oz, yellow, std)
Product No. 185652



Bottle (20oz, yellow, std)
Product No. 185670



Bottle (16oz, blue, std)
Product No. 185671



Bottle (24oz, yellow, std)
Product No. 2801816



Bottle (12oz, yellow, std)
Product No. 85649



Bottle (16oz, green, std)
Product No. 185673



Bottle (20oz, blue, thick)
Product No. 185672



Find more products like these here. 

FIFO BOTTLE ACCESSORIES FIFO BOTTLE



Holder, Bottle (8 bottles, 1/3" size)
Product No. 178762



Cap, Disp (6pk, yellow, std)
Product No. 185654



Dispense (Portion Pal, 16oz kit)
Product No. 2801822

CUSTOM PRODUCTS

Every kitchen is different, and one size never fits all. That's why AllPoints caters to the customized product needs of restaurants across the country. When your customers need something specific, count on us to deliver.



Knife Sharpener

Product No. 85771

- 144 piece minimum
- Imprint area: 2 1/4" x 5/8"
- Lead time: 5-6 weeks
- One-time setup charge applies

Let your customers know where to get replacements!

Color selections:

Finger guard

- Red
- Blue
- Dark green
- Black
- Orange

Imprint

- Red
- Blue
- Dark green
- Light green
- Black
- Orange



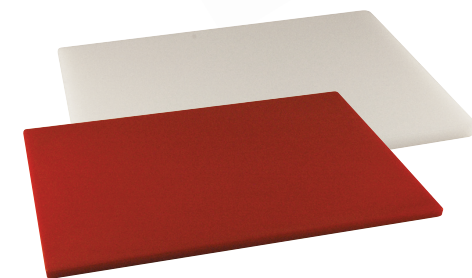
Hanging Thermometer

Product No. 621152

- Show your name, address, and phone number
- 500 piece minimum, orders must be in multiples of 100
- Only 30 characters per line, including spaces

- Add your logo for more impact
- Imprint area: 2" x 3/4"
- Lead time: 4 to 5 weeks; 1,000 or more: 6 weeks
- No set up charge

Makes a great give-away item!



Plastic Cutting Boards

- Custom dimensions
- Comes in three thicknesses: 1/2", 3/4" or 1"
- High temperature plastic: 350°F rated
- Tan color

- Standard plastic comes in five color options: white, red, blue, green or yellow

Scan this code for our custom imprinted knife sharpener order form.



Custom items are non-returnable so please use care with measurements and specifications when ordering.



ESSENTIAL PARTS + SUPPLIES GUIDE

GET IN TOUCH WITH US TODAY WITH QUESTIONS OR TO PLACE AN ORDER!

Call or text 800.332.2500 | custserv@allpointsfps.com

allpointsfps.com

620 Darling Dr, Vernon Hills, IL 60061